



Access ladder range:



- Better overview.
- Simplified attachment thanks to reduction of the components.
- Available more quickly.
- Simple and quick to assemble.
- Improved assembly and assembly instructions.

Steps in the selection of access ladders

1st step:

Establish the application, how is the ladder to be used? applicable standard:

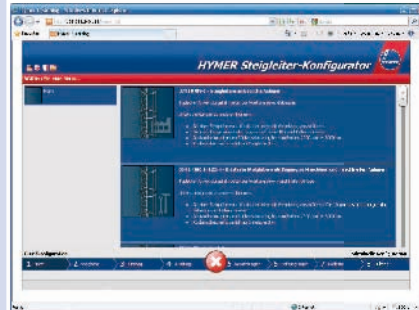
- as a maintenance ladder on a building DIN 18799-1
- as an escape ladder, fire escape ladder, escape route DIN 14094-1
- as access to machinery DIN EN ISO 14122-4
- as access to plant DIN EN ISO 14122-4 (may also be a building as part of a production plant)

2nd step:

According to the standard, is it necessary to order an access ladder that will fit exactly?

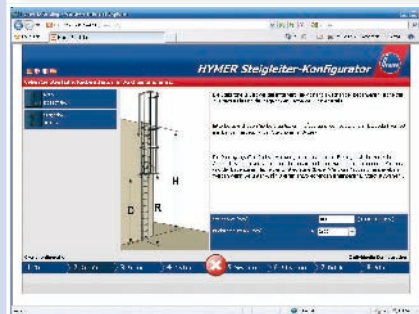
- Enquire via the Online Configurator or ask our sales department.
- Or is a set with all the components necessary to modify to fit on site required?
- Selection of the modular set with the next greater height from the following tables for the standards (pages 127, 129).

The online-configurator



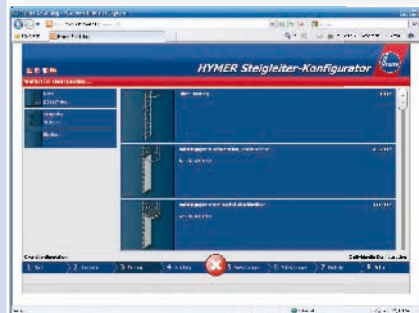
1. Select a standard

- DIN 18799-1 – Access ladders on structures
- EN ISO 14122-4 – Safety of machinery – Permanent means of access to machinery
- DIN 14094-1 – Escape ladder
- French standard NF E85-016



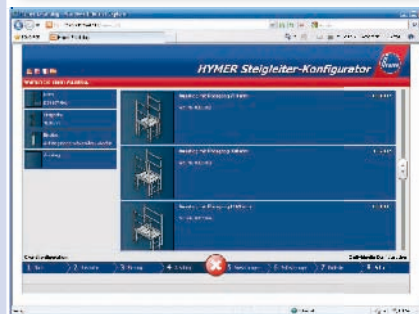
2. Enter the desired ascent height

A ladder safety cage will be suggested automatically according to the ladder height and the standard selected.



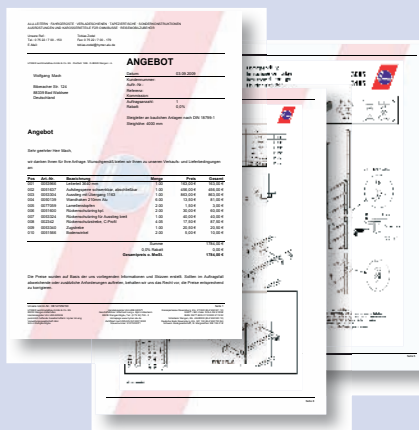
3. Selection of the entry form

Suitable entries will be proposed on the basis of the standard selected.



4. Selection of the exits

Up to 13 exit variants for all usual requirements are shown.



5. Save base configuration and exit

You will receive a detailed quotation with a dimensioned 3D drawing, parts list and assembly instructions.

Request your personal access data from:
www.hymer.de

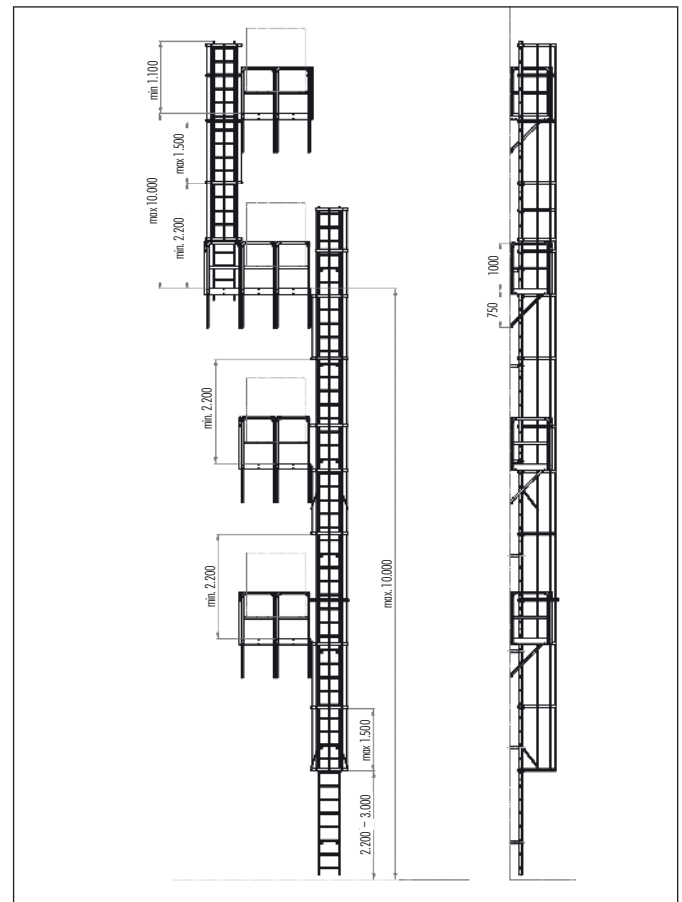
Escape ladders

Typical application: Escape ladder or fire escape ladder as a 2nd escape route

- From a vertical height of 10,000 mm, the ladder shall be installed with an overlap. The maximum length of a ladder section must not exceed 10,000 mm.
- Distance from the lowest safety cage clamp to the floor: 2,200 mm to 3,000 mm.
- Safety cage required from vertical height of 5,000 mm.

Platforms:

Our platforms are made of galvanised steel grating. We offer two sizes, fitting these we have extension platforms, to be assembled next to one another. The platforms are always supplied with handrails (page 136).



DIN 18799 / DIN 14094 access ladders

Aluminium

Included in scope of delivery:

- Standard wall fastenings (order no. 0050139)
- Adequate ladder flanges (order no. 0077209)
- One straight narrow exit (order no. 0053291)
- Narrow exit step (order no. 0054038)
- Standard safety cage clamps (order no. 0051600) and a clamp fitting the straight narrow exit (order no. 0054038) plus safety cage braces (order no. 002342) to be cut to length
- One diagonal tie pair per ladder section (order no. 0053340)
- From ascent height > 16 m one folding intermediate platform (order no. 0051635)

Building/ ascent height to [m]	Number of ladder sections [no.]			Overlap ** at height [m]	Quantity of wall fastenings	Quantity of safety cage clamps *	Order no.	
	1960 mm 0051522	2800 mm 0053965	3640 mm 0053966					
up to 10 m, single section								
2.68	1	-	-	-	6	-	318510	
3.52	-	1	-	-	8	-	318513	
4.64	2	-	-	-	8	-	318517	
from an ascent height of 5 m including ladder safety cage beginning at a maximum of 3 m above the ground								
5.48	1	1	-	-	10	3 + 1	318520	
6.60	3	-	-	-	10	4 + 1	318524	
7.44	2	1	-	-	10	4 + 1	318527	
8.28	1	2	-	-	12	5 + 1	318530	
9.12	-	3	-	-	11	6 + 1	318533	
9.96	-	2	1	-	14	6 + 1	318536	
from ascent height of 10 m, overlapped design								
10.80	5	1	-	5.54	20	7 + 1	318548	
12.20	-	5	-	6.10	20	9 + 1	318553	
13.88	-	3	2	6.94	22	10 + 1	318559	
15.56	-	1	4	7.78	24	11 + 1	318565	
from ascent height of 16 m, overlapped design with additional resting platform								
17.80	-	7	-	8.90	24	13 + 1	318573	
19.48	1	3	3	9.74	28	14 + 1	318579	

*) Standard safety cage clamps (order no. 0051600) and a safety cage clamp for the narrow exit (order no. 0054051)

***) includes 1 fixed platform each (order no. 0051630), two 3/4 clamps (order no. 0053981) with connector (order no. 0053332)

G

Fixed ladders as access to machinery and equipment.

Typical application: Ladder for maintenance of process plant

- Topmost rung must finish at the same level as the exit platform.
- The ladder shall be installed with an overlap from a vertical height of 10,000 mm. The length of a ladder section must not exceed 6,000 mm.
- The overlaps shall be arranged at equal intervals. May, however, be designed at a different height on request or through the online configurator.

Exemption: If overlaps are not possible for structural reasons, the ladder may also be designed longer than 10,000 mm in one section. In this case, the overlap must be replaced with a rest platform.

Exit:

- In accordance with DIN EN ISO 14122-4 the exit point must meet the highest safety requirements. The exit must be secured with a self-locking gate, the gap between the ladder and the building shall not be greater than 75 mm. The ascent stile must be connected to the exit step with a 1,500 mm long rail on both sides.
- The railing supplied may be omitted if it is possible to connect to a railing on the building.

Fastening:

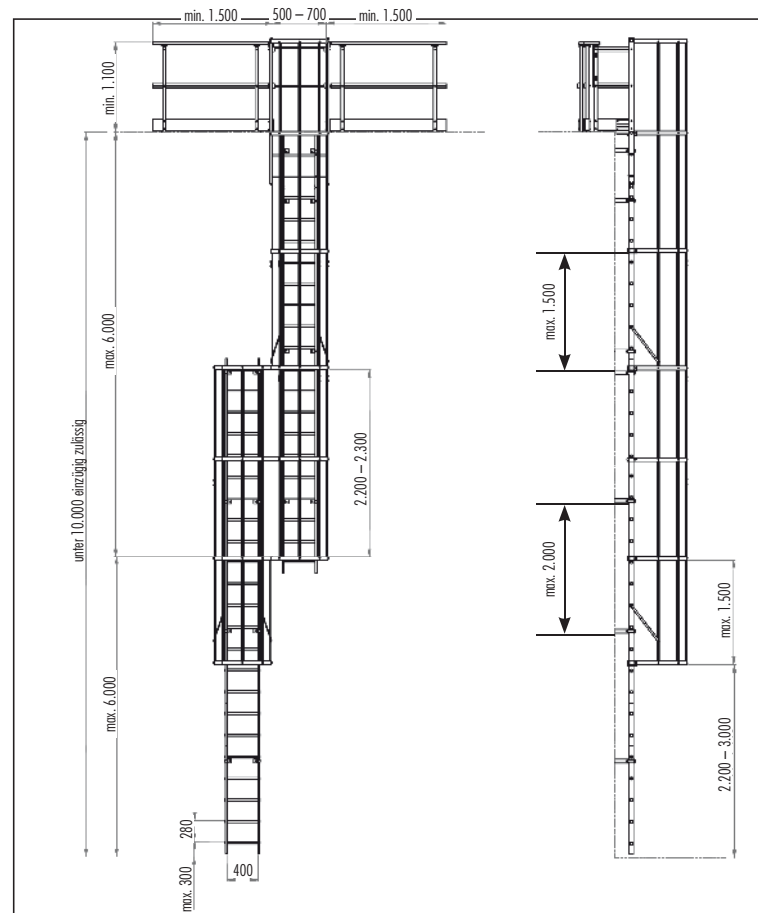
- The standard wall fastening has a distance between the stile and the building of 210 mm.
- Other fastening options are available, depending on the distance from the wall.
- The distance between the individual fastening points shall not exceed 2,000 mm, they shall, however, preferably be mounted beneath the rungs.

Ladder safety cage:

- Distance from the lowest safety cage clamp to the floor: 2,200 mm to 3,000 mm.
- Safety cage required from vertical height of 3,000 mm.

Accessories:

- Retractable, rope-operated access (page 133)
- Access barriers (page 133)
- Folding intermediate platform (page 132)
- Platforms (page 136)



DIN 14122 access ladders

Aluminium

Included in scope of delivery:

- Standard wall fastenings (order no. 0050139)
- Adequate ladder flanges (order no. 0077209)
- One straight wide exit (order no. 0053298) with step and barrier
- Standard safety cage clamps (order no. 0051600) and a clamp fitting the straight wide exit (order no. 0054050) and safety cage braces (order no. 002342) to be cut to size
- One diagonal tie pair per ladder section (order no. 0053340)
- An exit handrail for each side, left and right (order no. 0053335 + 0053336)

Building/ ascent height to [m]	Number of ladder sections [no.]			Overlap ** at height [m]			Quantity of wall fastenings	Quantity of safety cage clamps *	Order no.	
	1960 mm 0051522	2800 mm 0053965	3640 mm 0053966	1.	2.	3.				
up to 10 m, single section										
2.68	1	-	-	-	-	-	6	-	338510	
from an ascent height of 3 m including ladder safety cage beginning at a maximum of 3 m above the ground										
3.52	-	1	-	-	-	-	6	2 + 1	338513	
4.64	2	-	-	-	-	-	8	2 + 1	338517	
5.48	1	1	-	-	-	-	10	3 + 1	338520	
6.60	3	-	-	-	-	-	10	4 + 1	338524	
7.44	2	1	-	-	-	-	12	4 + 1	338527	
8.28	1	2	-	-	-	-	12	5 + 1	338530	
9.12	-	3	-	-	-	-	12	6 + 1	338533	
9.96	-	2	1	-	-	-	14	6 + 1	338536	
from ascent height of 10 m, overlapped design										
10.52	2	3	-	5.26	-	-	18	7 + 1	338547	
12.20	-	2	3	4.14	8.06	-	26	10 + 1	338562	
14.16	2	-	4	4.978	9.74	-	28	11 + 1	338569	
15.56	3	5	-	5.26	10.30	-	30	11 + 1	338574	
17.24	4	5	-	5.815	11.42	-	30	13 + 1	338580	
18.36	4	1	4	4.418	9.18	13.94	38	14 + 1	338593	
20.04	10	-	2	5.535	10.52	15.62	38	15 + 1	338599	

*) Standard safety cage clamps (order no. 0051600) and a safety cage clamp for the wide exit (order no. 0054050)

***) Includes 1 fixed platform each (order no. 0051630), two 3/4 clamps (order no. 0053981) with connector (order no. 0053332)

G