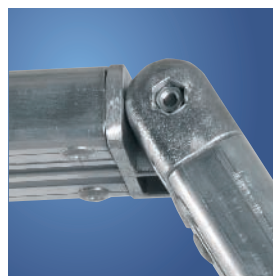


Standard modules:

- Step widths optionally 600, 800 or 1,000 mm.
- Step depths 200 mm for 60° and 250 mm for 45° stair inclination.
- Vertical step distance 250 mm for 60° and 210 mm for 45°.
- With non-slip aluminium profile steps as standard.
- All products optionally with stair pitch of 45° or 60°.
- Aluminium platforms (profile stairs) in dimensions of 100 mm steps, steel and aluminium grating platforms extendable in dimensions of 500 mm steps.
- For fixed use or as a mobile version.

Arguments:

- The modular system is based on screwed connections, so that welding was largely unnecessary.
- Thanks to the rational arrangement of assemblies, replacement of elements in the event of any repairs is unproblematic.
- Cleverly selected heights as intermediate sizes at the price of the next highest standard height.
- Maximum stability and flexibility thanks to specially designed extruded profiles with multifunctional screw channels.
- Stairs connected to the screw channel profiles for torsional rigidity.
- Fast, extremely variable connection of stiles with standardised connections made of elegant cast aluminium.
- Corrosion- and weatherproof aluminium.
- Variable modular construction enables customised special designs for all areas of application.
- Special T-fixtures enable platform connections for extension on all sides.
- Guardrails made of high-strength rectangular profile and ergonomically shaped handrail and knee board, guardrail at 1,100 mm, corner connector made of high-strength elegant cast aluminium.
- Handrail connections are made with precisely cast parts and ensure a high level of safety.
- Total load-bearing capacity 300 kg, step load 150 kg, higher loads on request.
- Generally shipped in pre-assembled parts from the factory for fast assembly on site.
- Special dimensions and other stair pitches are possible, please send us your request.



Guardrail connector elements made of cast aluminium

Handrail

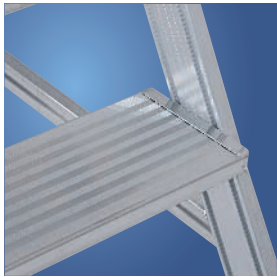


Corner connector

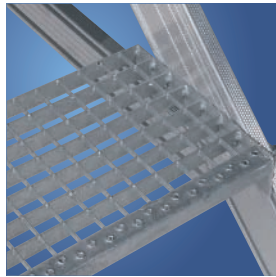


Knee board connection

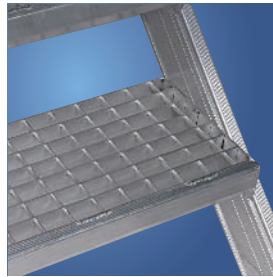
Step variants



Aluminium profile steps



Steel grating steps

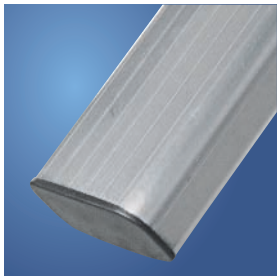


Aluminium grating steps

Note on European standard EN ISO 14122:

For safety reasons, preference is to be given to stairs with a 45° pitch. If local conditions do not allow this for reasons of space or if the stairs are rarely used, a stair pitch of 60° can be selected.

Handrail



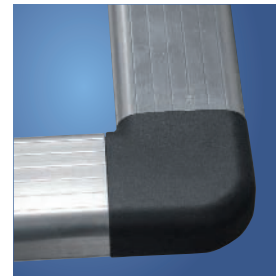
Ergonomic profile



Mounting bracket in screw channel



Variable mounting bracket



Plastic corner connector

Guardrail mounting



Screwed



Folding with safety clip



gesteckt

Recommendation by employers' liability insurance associations:

When used in the open, the industrial employers' liability insurance associations recommend the use of decks and steps made of aluminium or steel gratings.

General information:

Based on the following regulations and recommendations:
BGV D36, BGI 637, EN ISO 14122.

Connection plates for variable designs



Substructure braces at any angle



Stair-platform connection for pitches of 45° to 70°

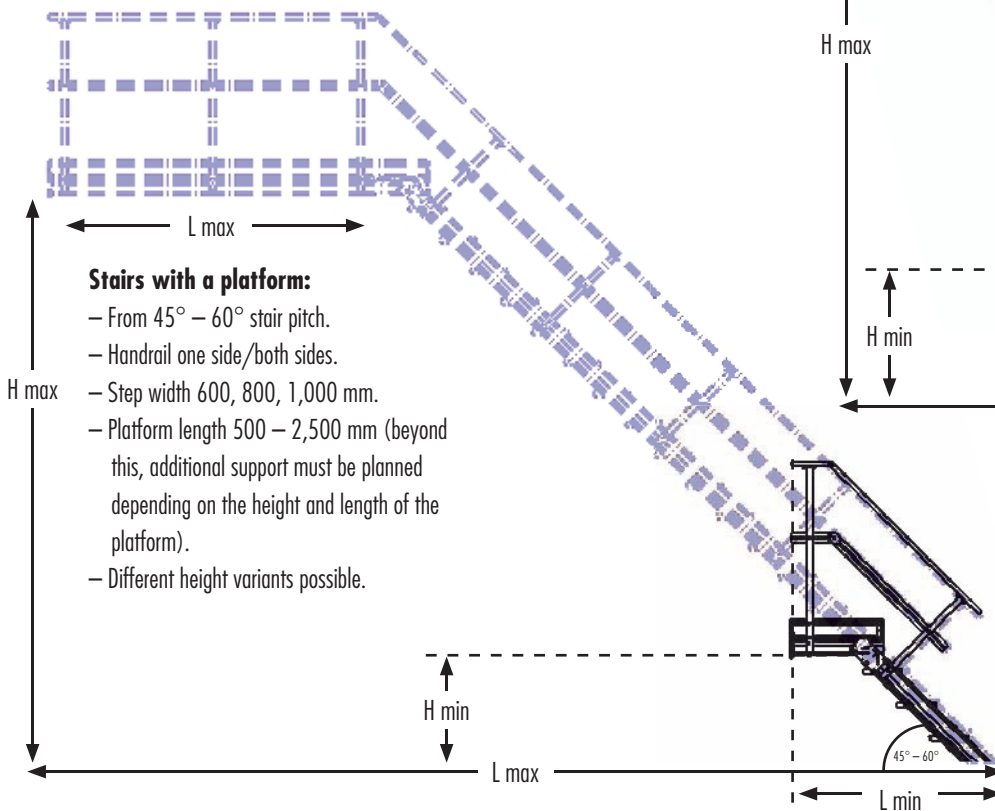


Platform connection

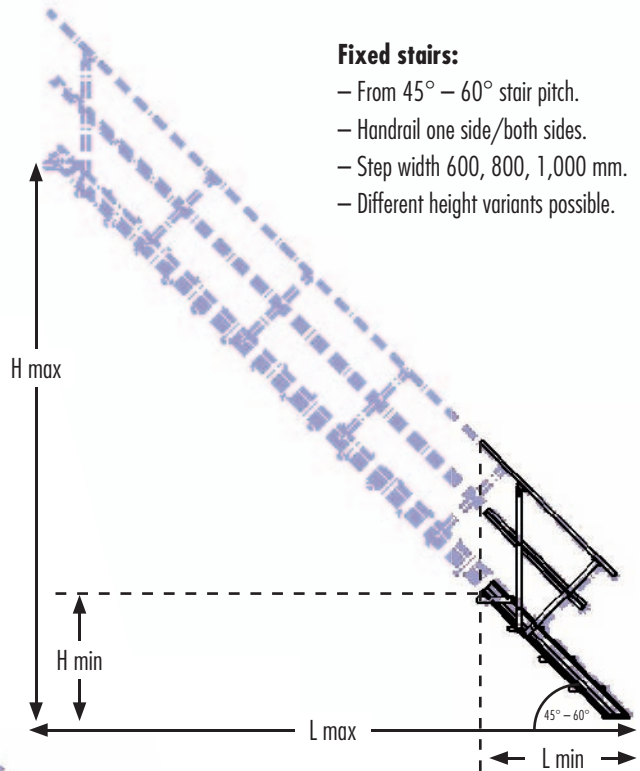
The HYMER modular system One system – many solid, fast solutions

The Hymer modular system offers all partners the capability of meeting their requirements for individual solutions in ladder technology in a cost-effective, compact and fast way. Fixed stairs, mobile stairs with a platform or bridging stairs can be produced with the Hymer modular system in a very short time.

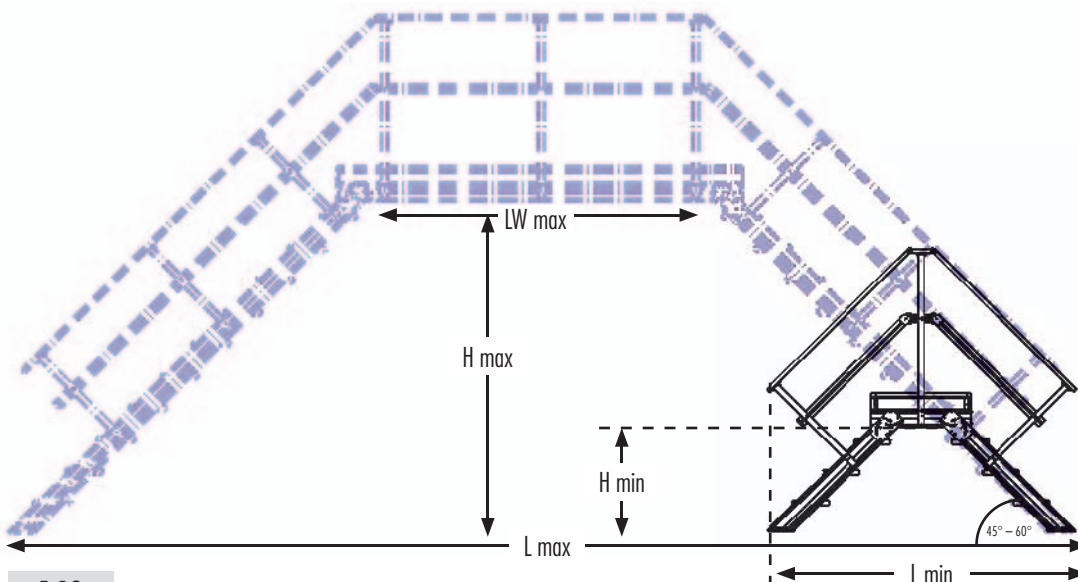
The following solutions are available:



Fast, time-saving product configuration with special online software. Ask your HYMER consultant for further information.



Customised solutions possible on request
info@hymer-alu.de
 Fax +49 7522 700385





1



2



3



4



5



6



7



8

- 1) Dornier Museum, Friedrichshafen
- 2) Stairs, platforms, guardrails for biogas installations
- 3) Walkway for maintenance operations
- 4) Work platform
- 5) Walkway for cathedral roof
- 6) Maintenance platform
- 7) Tanker filling ladder
- 8) Stairs and platform