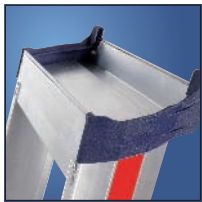


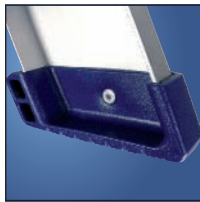
Freestanding step ladder with safety bridge, single-sided 6026

10 year guarantee

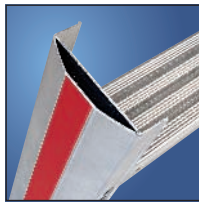
- New D-shaped stile for
 - considerably higher feeling of safety when working on the ladder
 - 4x higher torsion resistance of the stiles
 - considerably reduced tendency of the lower stiles to twist
- Conical, single ladder.
- Step depth 8 cm.
- Two high-strength straps as safety locking device from size 6.
- Deep aluminium tool tray with hook for bucket or small tools.
- The plastic rung cover of the support bracket prevents danger of pinching and protects against dirt in the hinge area.
- Dimensions of safety bridge 250 x 250 mm.



Tool tray



Wide, slip resistant plastic feet



D-stile for even better, higher stability



6026

You will find further freestanding step ladders on pages 23, 24, 35, 41, 42.

S

Number of steps		3	4	5	6	7	8	10
Stile	approx. mm	82	82	82	82	82	82	82
Length	approx. m	1.45	1.70	1.95	2.22	2.45	2.70	3.20
Standing height (height to platform)	approx. m	0.68	0.91	1.14	1.37	1.60	1.84	2.30
Working height	approx. m	2.18	2.41	2.64	2.87	3.10	3.34	3.80
Reach height	approx. m	2.68	2.91	3.14	3.37	3.60	3.84	4.30
Total vertical height	approx. m	1.33	1.56	1.79	2.02	2.25	2.49	2.95
Width	approx. mm	450	475	500	525	550	575	625
Width between stiles	approx. m	0.70	0.85	1.00	1.15	1.30	1.50	1.80
Weight	approx. kg	5.6	6.3	7.4	8.2	9.4	10.5	12.2
EAN code		4019502339743	4019502339750	4019502339767	4019502339774	4019502339781	4019502339798	4019502339804
Order no.		602603	602604	602605	602606	602607	602608	602610

For an explanation of working height/reach height in accordance with BGI 694, see page 10.

Double-sided freestanding step ladder 6024

10 year guarantee

- New D-shaped stile for
 - considerably higher feeling of safety when working on the ladder
 - 4x higher torsion resistance of the stiles
 - considerably reduced tendency of the lower stiles to twist
- Conical, double ladder.
- Two high-strength straps as anti-spread device.
- Step depth 8 cm.
- Maintenance-free hinge device (dirt cannot accumulate).

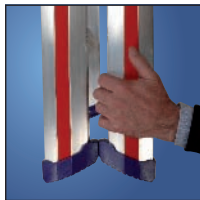
Attention: Hinged step (top step) must not be used as standing step from model 6024/2x5 upwards.



6024



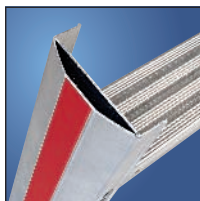
Continuous hinges



Transport position protects against trapped fingers



Wide, slip resistant plastic feet



D-stile for even better, higher stability

You will find further freestanding step ladders on pages 23, 24, 34, 41, 42.

S

Number of steps		2x2	2x3	2x4	2x5	2x6	2x7	2x8	2x10
Stile	approx. mm	82	82	82	82	82	82	82	82
Length	approx. m	0.52	0.78	1.02	1.26	1.50	1.77	2.00	2.50
Standing height	approx. m	0.20	0.45	0.70	0.90	1.15	1.40	1.60	2.10
Working height	approx. m	1.70	1.95	2.20	2.40	2.65	2.90	3.10	3.60
Reach height	approx. m	2.20	2.45	2.70	2.90	3.15	3.40	3.60	4.10
Total vertical height	approx. m	0.45	0.65	0.90	1.15	1.35	1.60	1.80	2.30
Width	approx. mm	425	450	475	500	525	550	575	625
Width between stiles	approx. m	0.55	0.75	0.95	1.15	1.35	1.55	1.75	2.10
Weight	approx. kg	3.2	4.5	5.7	6.9	8.1	9.5	10.8	13.7
EAN code		4019502339620	4019502339637	4019502339644	4019502339651	4019502339668	4019502339675	4019502339682	4019502339699
Order no.		602404	602406	602408	602410	602412	602414	602416	602420

For an explanation of working height/reach height in accordance with BGI 694, see page 10.